



Photograph of Sample  
500  
microns

# EH-Immunity-300 Auravir

## Certificate of Analysis

**Assay Date:** October 28, 2020 **License #:**

**Material:** Tincture

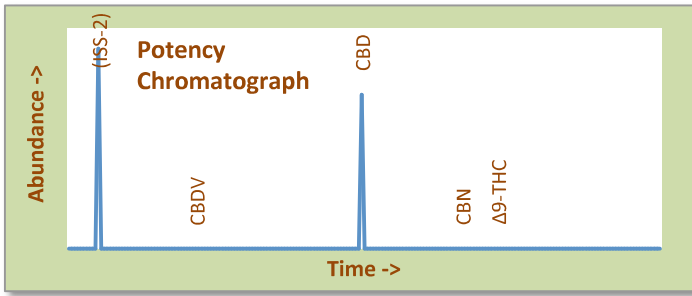
**Method:** HPLC

**Internal ID:** HMP 1388 *Sample collected by client*

**Moisture:** Not Performed

**α-Tocopherol:** Not Performed

**Foreign Material Inspection**  
**Inspection not required**



**Abundant Terpenes**

1) α-Pinene	**	11) Terpinolene	**
2) Camphene	**	12) Linalool	**
3) β-Pinene	**	13) Isopulegol	**
4) Myrcene	**	14) Geraniol	**
5) 3-Carene	**	15) β-Caryophyllene	**
6) α-Terpinene	**	16) α-Humulene	**
7) d-Limonene	**	17) Nerolidol	**
8) p-Cymene	**	18) Guaiol	**
9) Ocimene	**	19) α-Bisabolol	**
10) γ-Terpinene	**		

**Terpene Total (not performed)**

Cannabinoid	mg/gram	Method
Δ9-THC	<0.1	hplc
Δ9-THCa	<0.1	hplc
CBN	<0.1	hplc
CBD	12.0	hplc
CBDa	<0.1	hplc
Total CBG	<0.1	hplc
Δ8-THC	<0.1	hplc
Total	12.0	

**Total THC <0.1%**  
*Δ9 Activation >99%*

**Total THC < 0.1 mg/unit**

**Total CBD = 1.2%**  
*CBD Activation >99%*

**Total CBD = 360 mg/unit**

**Terpene Profile**

(analysis not performed)

-- Unit Size: 30 g --

\*Δ9-THC, Δ9-THCa and Total CBD are reported to BioTrack. 'np' = test not performed



**TerpType®: (profile not performed)**

**Residual Solvents (ppm), bold-red if failed\***

(residuals test not performed)

**Microbial Screen (cfu/gram) Observed Rate**

- Total aerobic plate count:	**	(test not performed)
- Total yeast and mold count:	**	(test not performed)
- Bile-tolerant gram negative:	**	(test not performed)
- E. Coli:	**	(test not performed)
- Salmonella spp.:	**	(test not performed)
- Mycotoxins (B1, B2, G1, G2, OA):	**	(test not performed)

**Microbial Screen Not Performed**

Limits of Detection (LODs) for all reported analytes can be found at: <http://riograndeanalytics.net/Sensitivity.html>

\* Residual limits can be found at: <http://riograndeanalytics.net/Residuals.html>



Approved on October 31, 2020  
Results are non-transferable and valid for 30 days.

*Barry Dungan*  
Barry Dungan - lab manager