

Photograph of Sample

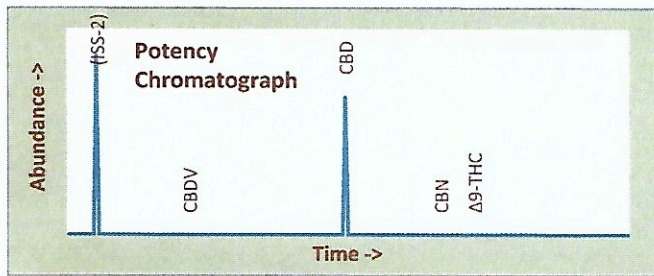


# Cooling Salve 250mg Auravir

Certificate of Analysis

**Assay Date:** November 5, 2020      **License #:**  
**Material:** Salve      NMED 029851  
**Method:** HPLC  
**Internal ID:** HMP 1442      *Sample collected by client*  
**Moisture:** Not Performed  
**α-Tocopherol:** Not Performed

**Foreign Material Inspection**  
**Inspection not required**



**Abundant Terpenes**

1) a-Pinene	**	11) Terpinolene	**
2) Camphene	**	12) Linalool	**
3) b-Pinene	**	13) Isopulegol	**
4) Myrcene	**	14) Geraniol	**
5) 3-Carene	**	15) b-Caryophyllene	**
6) a-Terpinene	**	16) a-Humulene	**
7) d-Limonene	**	17) Nerolidol	**
8) p-Cymene	**	18) Guaaiol	**
9) Ocimene	**	19) a-Bisabolol	**
10) g-Terpinene	**		

Terpene Total (not performed)

Cannabinoid	mg/gram	Method
Δ9-THC	<0.1	hplc
Δ9-THCa	<0.1	hplc
CBN	<0.1	hplc
CBD	4.0	hplc
CBDa	<0.1	hplc
Total CBG	<0.1	hplc
Δ8-THC	<0.1	hplc
Total	3.5	

**Total THC <0.1%**  
 Δ9 Activation >99%

**Total THC <0.1 mg/unit**

**Total CBD = 0.402%**  
 CBD Activation >99%

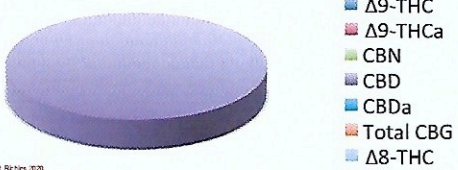
**Total CBD = 241.2 mg/unit**

-- Unit Size: 60 g --

**Terpene Profile**

(analysis not performed)

\*Δ9-THC, Δ9-THCa and Total CBD are reported to BioTrack. 'np' = test not performed



**TerpType®: (profile not performed)**

**Residual Solvents (ppm), bold-red if failed\***

(residuals test not performed)

**Microbial Screen**      Observed Rate (cfu/gram)

- Total aerobic plate count:      \*\* (test not performed)
- Total yeast and mold count:      \*\* (test not performed)
- Bile-tolerant gram negative:      \*\* (test not performed)
- E. Coli:      \*\* (test not performed)
- Salmonella spp.:      \*\* (test not performed)
- Mycotoxins (B1, B2, G1, G2, OA):      \*\* (test not performed)

**Microbial Screen Not Performed**

Limits of Detection (LODs) for all reported analytes can be found at: <http://riograndeanalytics.net/Sensitivity.html>

\*Residual limits can be found at: <http://riograndeanalytics.net/Residuals.html>



Approved on November 08,  
 Results are non-transferable

*Barry Dungan*  
 Barry Dungan - lab manager